



First Mercy Physician Offices Go Live on Epic System

Mercy has successfully launched the Epic electronic health record (EHR) system at physician offices in Northwest Arkansas and Springfield, St. Louis and Washington, Missouri. Practice management applications are used to register patients and add documents such as consent forms and insurance-related information into patients' electronic records. Clinical applications are used to document patient care, place orders and begin building a consolidated electronic health record for each patient. Additional Mercy physician offices across the System will go live on the Epic system later this year and in early 2009. •



"Red Shirt" experts guide co-workers at a Crestwood, Missouri, physician office through their first day of using the Epic electronic health record system.

St. Joseph's Mercy and Heritage Physician Group Announce Partnership

St. Joseph's Mercy Health System in Hot Springs, Arkansas, recently announced the integration of Heritage Physician Group into its system. The physician group, which was renamed St. Joseph's Mercy Clinic, brings 37 physicians and nearly 300 other co-workers to St. Joseph's Mercy. Physicians and staff will continue providing care in their current locations, but the integrated effort between physicians and hospital will provide more coordinated, cost-effective healthcare to the community.

St. John's Named One of Top Integrated Health Networks



St. John's Health System in Springfield, Missouri, is the third highest-ranking integrated health network (IHN) in the country, according to the 2008 Verispan IHN assessment. The Verispan 2008 IHN 100 recognizes healthcare systems that operate as a unified organization, building a strong base of services to provide the highest level of care. St. John's has been on the list since 1999, achieving the top spot last year. •

St. Edward Mercy Opens Wound Care Clinic and Hyperbaric Center

St. Edward Mercy Medical Center in Fort Smith, Arkansas, recently opened a new Wound Care Clinic and Hyperbaric Center inside the Medical Center. The outpatient clinic is designed to provide highly specialized care for difficult to heal wounds, including those associated with diabetes, surgery, sickle cell anemia and other conditions. The hyperbaric chamber is the largest in the surrounding two-state area. •

Mercy Opens Quick Care Clinic in Kansas Grocery Store



The Mercy Quick Care health clinic located inside the Woods Supermarket in Fort Scott, Kansas.

Mercy Health Center in Fort Scott, Kansas, recently teamed up with a local supermarket to open Mercy Quick Care, a health clinic located inside the Woods Supermarket in Fort Scott. The clinic, which is staffed by nurse practitioners, sees patients with minor health concerns and offers screenings for well individuals. •

Ardmore Hospital Breaks Ground on New Patient Tower



Mercy Memorial Health Center's new patient tower will expand services offered to the community when it opens in early 2010.

Mercy Memorial Health Center in Ardmore, Oklahoma, recently broke ground on a \$60 million patient tower. The tower will house 158 private rooms, a women's health center, an improved intensive care unit, new entrance and additional parking. Construction is expected to be complete in February 2010. •

Leadership Changes

Jayson Chitwood has been named vice president of applications for Mercy Information Services Division.



Jayson Chitwood

Joel James has been named vice president of mission for St. Edward Mercy Medical Center in Fort Smith, Arkansas.



Joel James

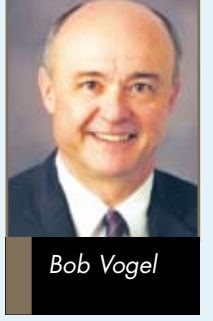


Fred McQueary, M.D.

Fred McQueary, M.D., has been named president of St. John's Clinic – Springfield Division.



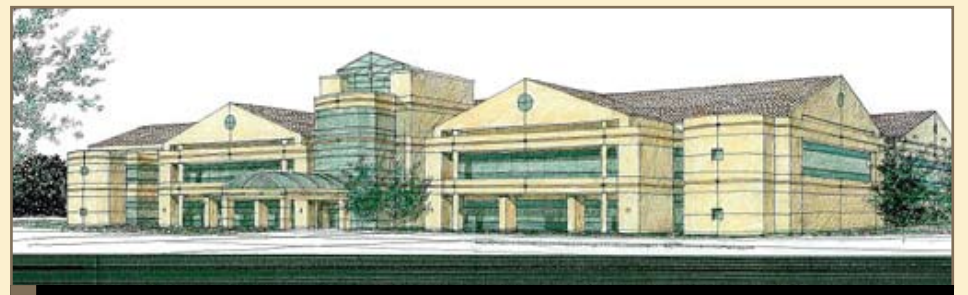
Becky Payton



Bob Vogel

Becky Payton has been named vice president of human resources for Mercy Health System of Oklahoma.

Bob Vogel, vice president of managed care for Mercy, has been named interim CEO for Mercy Health Plans. He succeeds Michael Murphy, who resigned in March. •



When it opens in 2010, the Oklahoma Heart Hospital South Campus will provide specialized cardiac care to residents of the southern part of Oklahoma City.

Oklahoma Heart Hospital to Expand to Second Campus

Oklahoma Heart Hospital and three other Oklahoma City hospitals have partnered to create Oklahoma Heart Hospital South Campus, a \$75-million, 163,000-square-foot, all-digital facility totally dedicated to cardiac care. The new campus will be based on the successful model of Oklahoma Heart Hospital in the northern part of Oklahoma City, and will provide services to the underserved southern part of the city. The official groundbreaking took place in late 2007 with completion targeted for fall 2010. Oklahoma Heart Hospital was established in 2002 through a partnership between Oklahoma Cardiovascular Associates and Mercy Health System of Oklahoma. •

St. John's Mercy, Mercy Corporate Office Honored as "Best Places to Work"



St. John's Mercy Medical Center and the Sisters of Mercy Health System (Mercy) corporate office have been recognized as among the Best Places to Work in St. Louis. The awards were based on employee surveys conducted through the *St. Louis Business-Journal* and were announced in the April 11 issue.

St. John's Mercy was named the first-place winner in the "giant employers"

category (2000-plus employees) and Mercy's corporate office took third-place honors in the "large employers" category (650 to 2000 employees). St. John's Mercy and Mercy were among 19 St. Louis-based employers honored out of a total of more than 200 companies that participated in the Best Places to Work recognition program.

"What's exciting is that our selection was based entirely on co-worker feedback. Through the survey process, Mercy co-workers told St. Louis that we are a great place to work," said Tony Kinslow, corporate vice president of human resources. "It's also significant to note that St. John's Mercy and Mercy's corporate office were the only healthcare organizations recognized." •



14528 S. OUTER FORTY ■ SUITE 100 ■ CHESTERFIELD, MO 63017

First Class Mail
U.S. Postage
PAID
CHESTERFIELD, MO
Permit No. 18