

## Can I use lotion after I bathe with CHG soap?

Yes. You can use a lotion after you bathe with CHG soap if you use a lotion approved by the hospital that works well with CHG. Most over-the-counter lotions are not okay to use with CHG.

## What about when I go home?

Your doctor or nurse will tell you if you need to use CHG at home.



# Bathing with Chlorhexidine

Patient Family Information



Your life is our life's work.



Your life is our life's work.



# Daily Chlorhexidine Bathing Fact Sheet

## What is Chlorhexidine Gluconate (CHG) soap?

CHG soap is used to reduce the number of germs on your skin. This soap is different than other soap because it kills germs on your skin for up to 24 hours after using it and works when other body fluids such as blood or sweat are present.

## Why is CHG bathing important?

Bacteria, viruses, and fungi can live on your skin or on surfaces in your environment. Studies show that your chance of getting an infection is lower when the number of germs on your skin is lower. Reducing the chance of getting an infection is important because infections lead to longer hospital stays and increased costs.

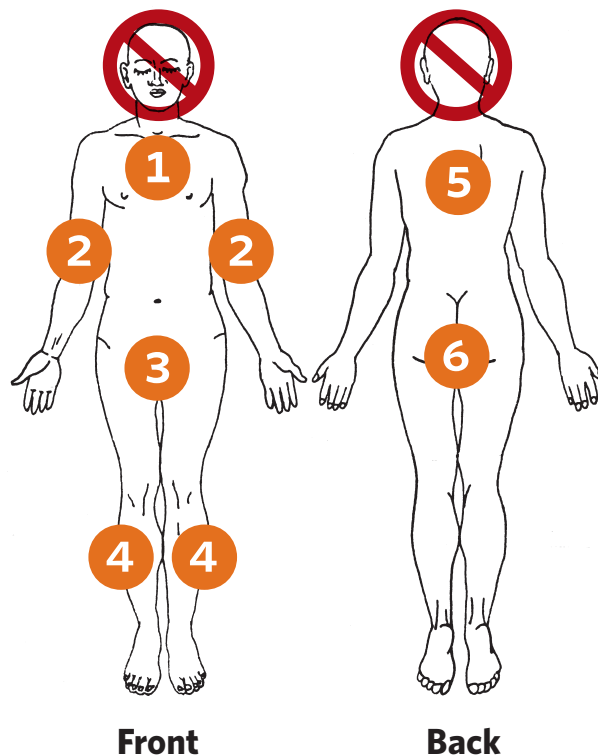
## Does CHG soap hurt metal jewelry or jewelry stones?

No. There is no data to show that CHG soap hurts metal jewelry or jewelry stones.

## How do I shower or bathe with CHG (Hibiclens Foam soap)?

*Note: if you cannot bathe yourself, a staff member will assist you.*

1. Wash your hair using regular shampoo. Then rinse your hair.
2. Do not wash your face with Hibiclens® Foam soap. Wash your face with regular soap or water only.



3. Pump Hibiclens Foam soap directly on your skin or on a wet washcloth and wash from the chin down. Use a new washcloth for each body area. When showering, step away from the water to avoid rinsing the Hibiclens off too soon. Apply the foam directly on your skin or on a wet washcloth and spread the foam. Allow the soap to stay on the skin for 1 minute before rinsing.
4. Rinse with warm water or wet washcloth.
5. Do not use your regular soap after you use the Hibiclens® Foam soap.
6. Dry your skin with a towel.
7. If you need to use a lotion, only use the lotion given to you by the hospital.
8. Put on a clean gown or clothes after bathing.

**If you have an allergy to Chlorhexidine or if severe skin irritation occurs,** do not use CHG/Hibiclens. Let a member of the health care team know and use an alternate bathing product.