



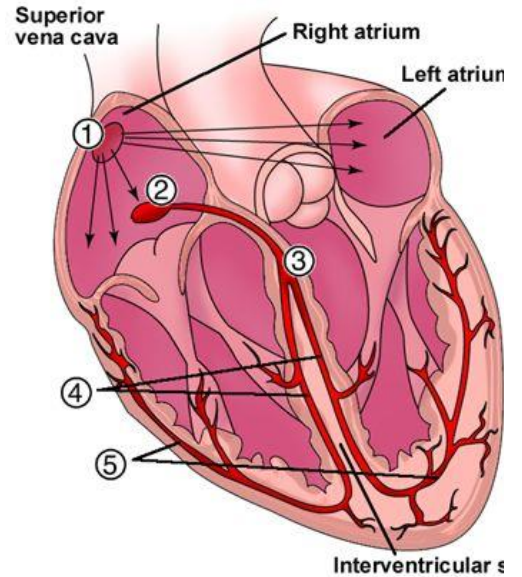
## Basic Dysrhythmia Participant Guide

June 2019

# Basic Dysrhythmia Participant Guide

## Structural Anatomy

1.	_____
2.	_____
3.	_____
4.	_____
5.	_____



Rate of SA node: \_\_\_\_\_

Rate of AV node: \_\_\_\_\_

Rate of the ventricles: \_\_\_\_\_

### ECG Tracing

Time of one small box: \_\_\_\_\_

Time of one large box: \_\_\_\_\_

P wave represents: \_\_\_\_\_

PR interval represents: \_\_\_\_\_

QRS represents: \_\_\_\_\_

T wave represents: \_\_\_\_\_

PR interval measurement: \_\_\_\_\_

QRS measurement: \_\_\_\_\_

QT measurement: \_\_\_\_\_

### Steps for Interpretation

1. \_\_\_\_\_
2. \_\_\_\_\_
3. \_\_\_\_\_
4. \_\_\_\_\_
5. \_\_\_\_\_

Determine heart rate by Six Second Method: \_\_\_\_\_

Determine heart rate by the Precise Rate Method: \_\_\_\_\_

## Rhythm Interpretation



### Normal Sinus

1. Regularity –
2. Rate –
3. P Wave –
4. PR Interval –
5. QRS Interval–



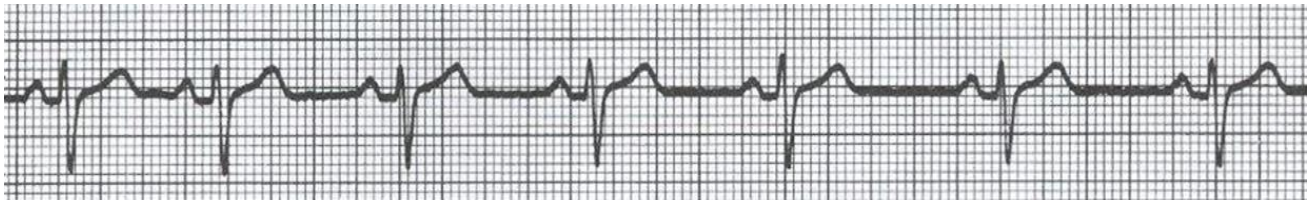
### Sinus Bradycardia

1. Regularity –
2. Rate –
3. P Wave –
4. PR Interval –
5. QRS Interval–



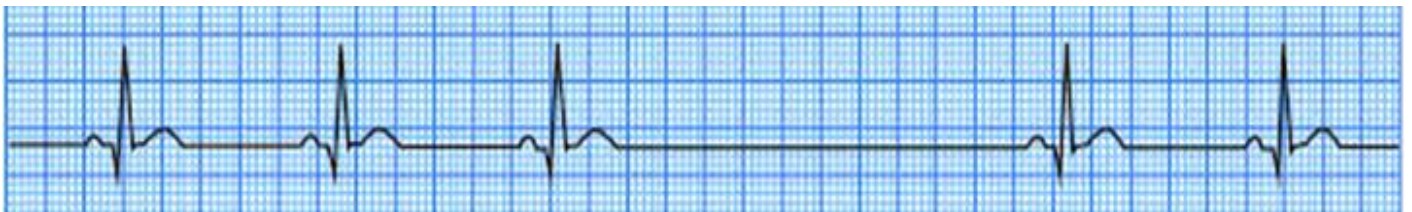
### Sinus Tachycardia

1. Regularity –
2. Rate –
3. P Wave –
4. PR Interval –
5. QRS Interval–



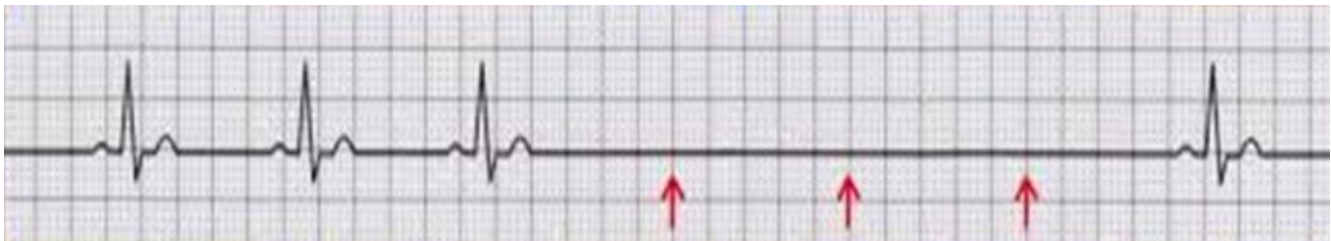
### Sinus Arrhythmia

1. Regularity –
2. Rate –
3. P Wave –
4. PR Interval –
5. QRS Interval–



### Sinus Pause

1. Regularity –
2. Rate –
3. P Wave –
4. PR Interval –
5. QRS Interval–



### Sinus Arrest

1. Regularity –
2. Rate –
3. P Wave –
4. PR Interval –
5. QRS Interval–





### Supraventricular Tachycardia

1. Regularity –
2. Rate –
3. P Wave –
4. PR Interval –
5. QRS Interval–



### Atrial Flutter

1. Regularity –
2. Rate –
3. P Wave –
4. PR Interval –
5. QRS Interval–



### Atrial Fibrillation

1. Regularity –
2. Rate –
3. P Wave –
4. PR Interval –
5. QRS Interval–



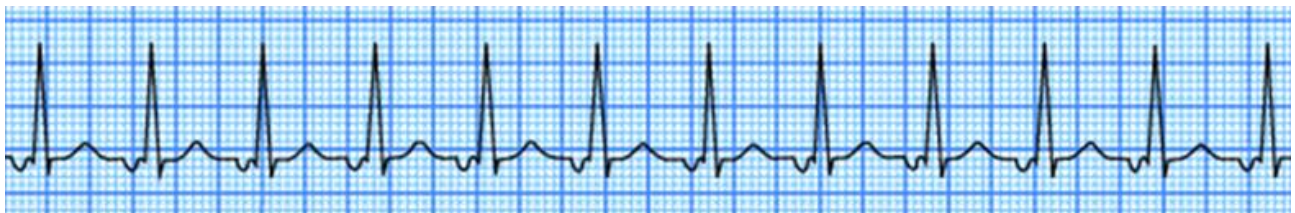
### Junctional

1. Regularity –
2. Rate –
3. P Wave –
4. PR Interval –
5. QRS Interval–



### Accelerated Junctional Rhythm

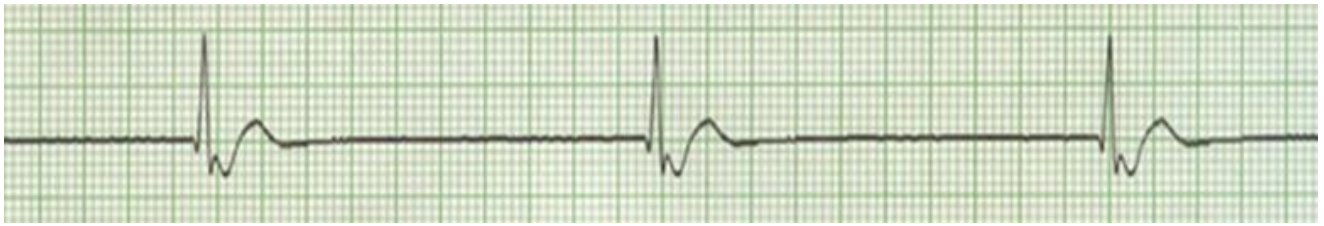
1. Regularity –
2. Rate –
3. P Wave –
4. PR Interval –
5. QRS Interval–



### Junctional Tachycardia

1. Regularity –
2. Rate –
3. P Wave –
4. PR Interval –
5. QRS Interval–





### Junctional Bradycardia

1. Regularity –
2. Rate –
3. P Wave –
4. PR Interval –
5. QRS Interval–



### Idioventricular

1. Regularity –
2. Rate –
3. P Wave –
4. PR Interval –
5. QRS Interval–



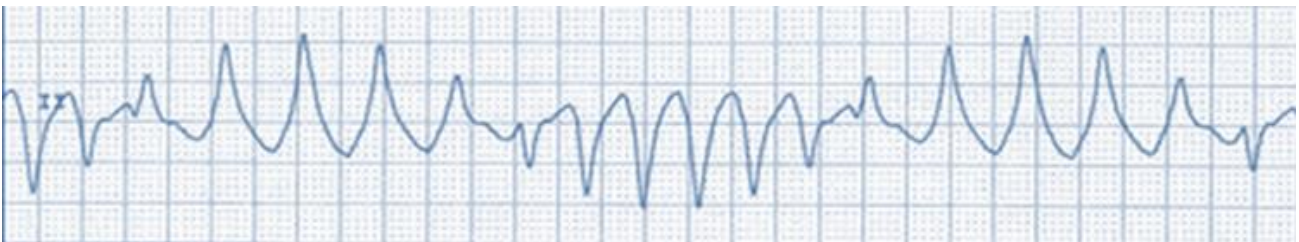
### Accelerated Idioventricular

1. Regularity –
2. Rate –
3. P Wave –
4. PR Interval –
5. QRS Interval–



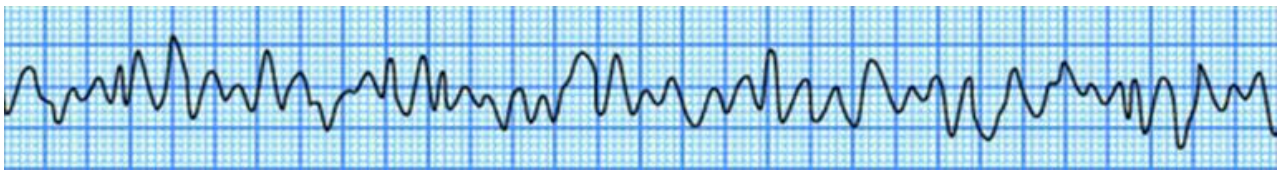
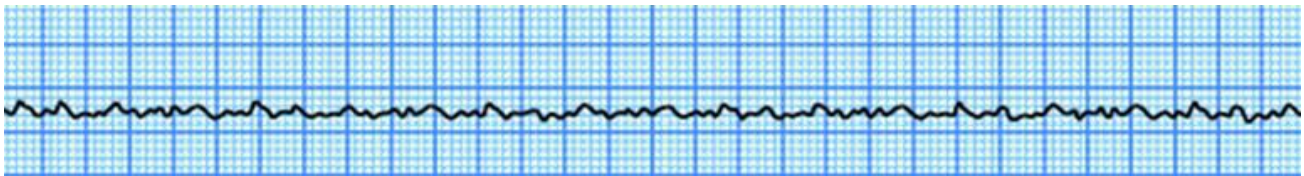
### Ventricular Tachycardia

1. Regularity –
2. Rate –
3. P Wave –
4. PR Interval –
5. QRS Interval–



### Torsades de Points

1. Regularity –
2. Rate –
3. P Wave –
4. PR Interval –
5. QRS Interval–



### Ventricular Fibrillation

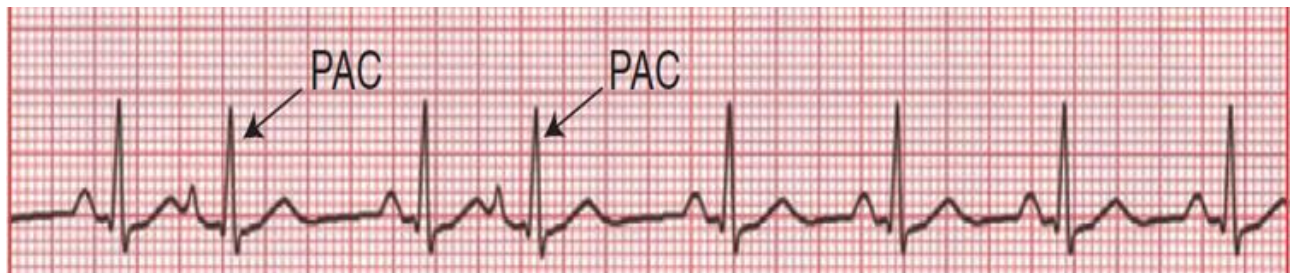
1. Regularity –
2. Rate –
3. P Wave –
4. PR Interval –
5. QRS Interval–





### Asystole

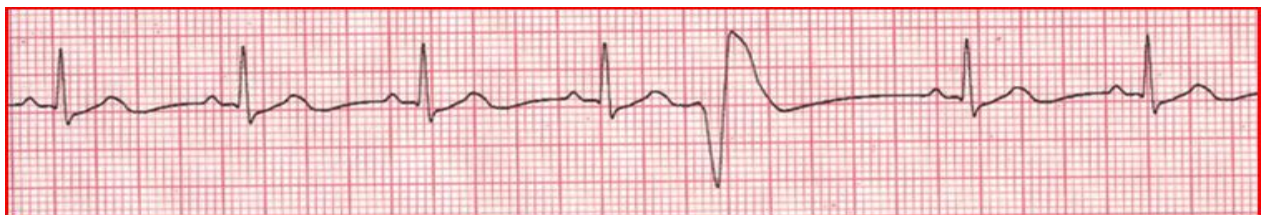
1. Regularity –
2. Rate –
3. P Wave –
4. PR Interval –
5. QRS Interval–



### Premature Atrial Contraction



### Premature Junctional Contraction



### Premature Ventricular Contraction



### Escape Beats

1. Regularity –
2. Rate –
3. P Wave –
4. PR Interval –
5. QRS Interval–



### First Degree Block

1. Regularity –
2. Rate –
3. P Wave –
4. PR Interval –
5. QRS Interval–



### Second Degree Block Type I (Wenkebach)

1. Regularity –
2. Rate –
3. P Wave –
4. PR Interval –
5. QRS Interval–





**Second Degree Block Type II (Mobitz)**

1. Regularity –
2. Rate –
3. P Wave –
4. PR Interval –
5. QRS Interval–



**Third Degree Heart Block (Complete Heart Block)**

1. Regularity –
2. Rate –
3. P Wave –
4. PR Interval –
5. QRS Interval–

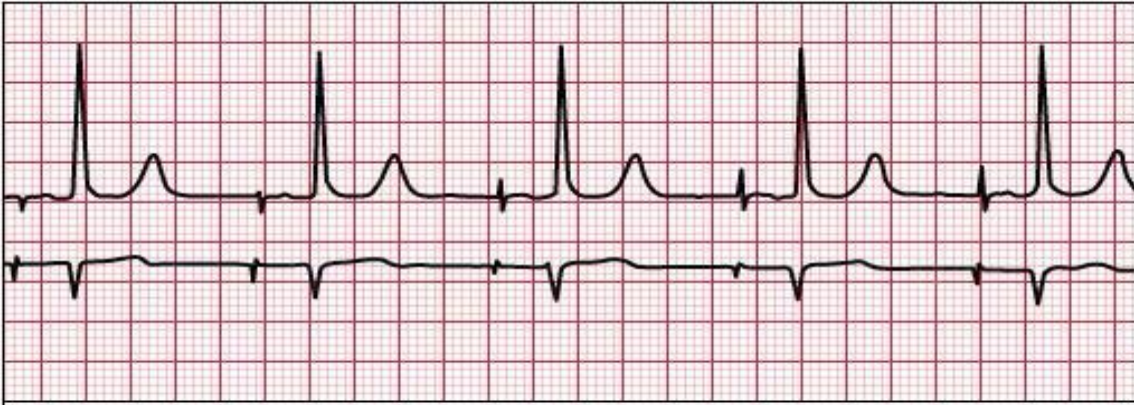


**Bundle Branch Blocks**

1. Regularity –
2. Rate –
3. P Wave –
4. PR Interval –
5. QRS Interval–

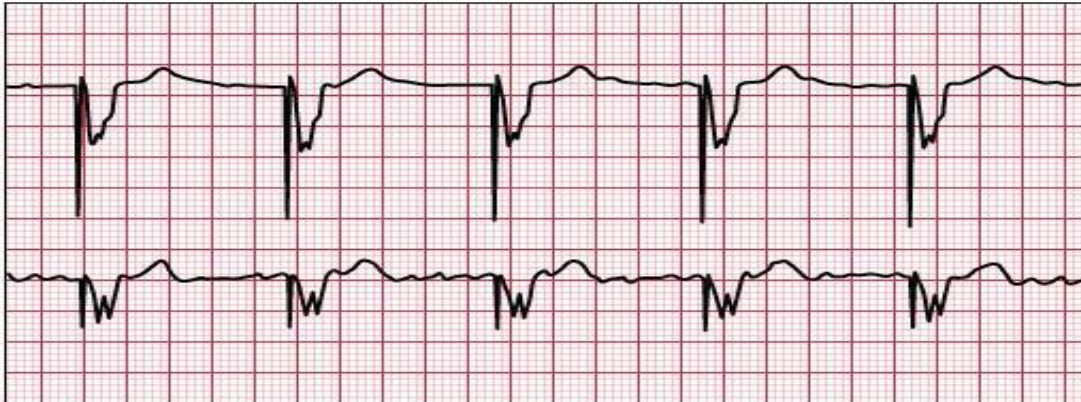


### Atrial Pacemaker (single chamber)



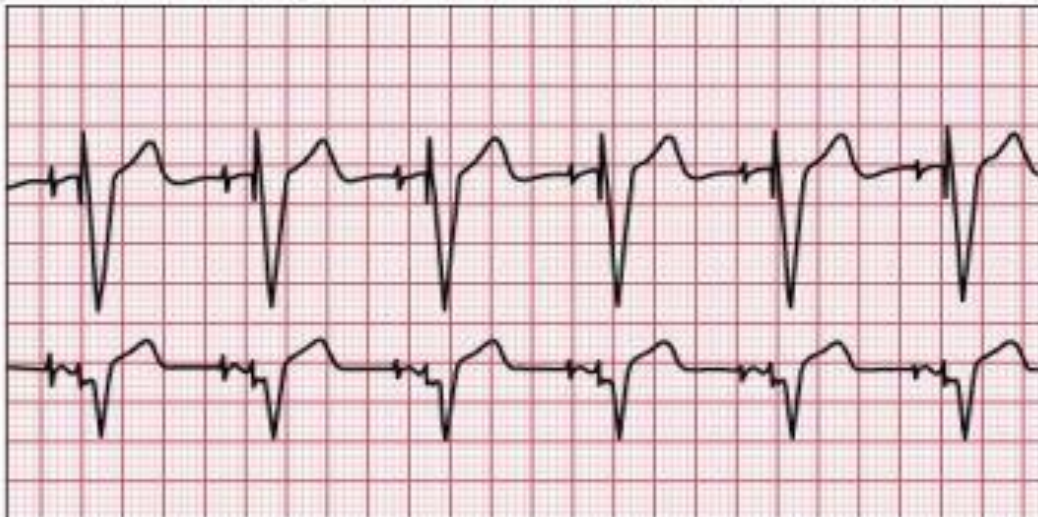
**One spike producing an abnormal P wave (atrial capture)  
followed by a normal QRS**

### Ventricular Pacemaker (single chamber)



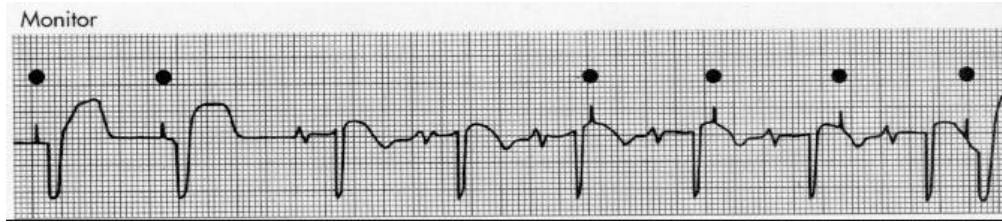
**One spike producing a wide QRS (ventricular capture)**

### AV Sequential Pacemaker (dual chamber)

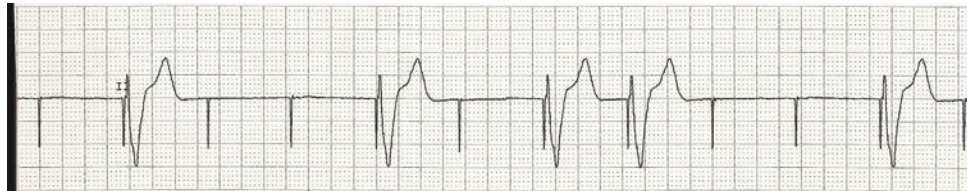


**One spike followed by an abnormal P (atrial capture) followed by a  
Second spike producing a wide QRS (ventricular capture).**

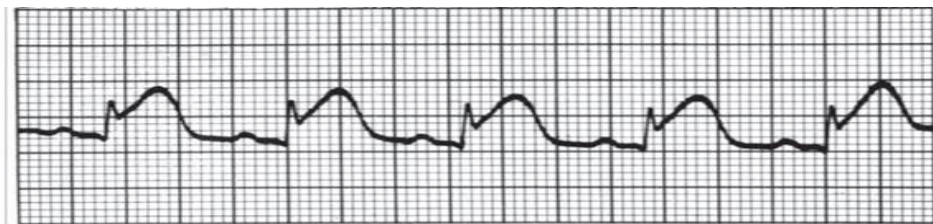
### Failure to Sense



### Failure to Capture



### ST Segment Elevation



Scan the following QR code to complete the course evaluation.



Or go to: <http://Mercy.net/basicdysilt>